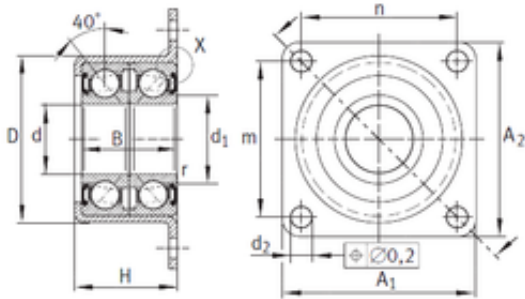




# NTN Bearing Manufacturing

12 mm x 35,45 mm x 20 mm INA  
ZKLR1244-2RS angular contact ball bearings



ZKLR1244-2RS Bearing 2D drawings and 3D CAD models

Bearing No. ZKLR1244-2RS

Size	12x35.45x20 mm
Bore Diameter	12 mm
Outer Diameter	35,45 mm
Width	20 mm
d	12 mm
D	35,45 mm
B	20 mm
n	32 mm
d1	16,6 mm
d2	6,6 mm
m	38 mm
r min.	0,3 mm
A1	44 mm
H	22 mm
Bolt (G)	M6
A2	50 mm
Weight	0,12 Kg
Dynamic load rating radial (C)	13,6 kN
Dynamic load rating axial (C)	13,2 kN
Static load rating radial (C0)	8,5 kN
Static load rating axial (C0)	17,9 kN
Category	Mounted Units & Inserts
Inventory	0.0
Manufacturer Name	SCHAEFFLER GROUP



## NTN Bearing Manufacturing

Minimum Buy Quantity	N/A
Weight / Kilogram	0.144
EAN	4012802079166
Product Group	M06110