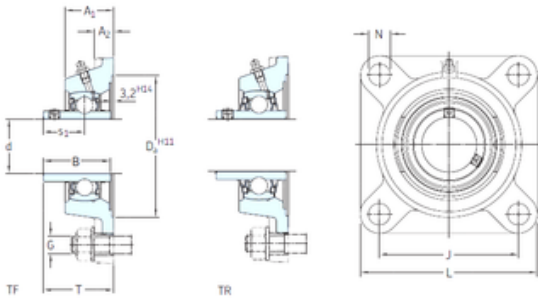




NTN Bearing Manufacturing

SKF FY 1.1/4 FM bearing units

Bearing No. FY 1.1/4 FM



FY 1.1/4 FM Bearing 2D drawings and 3D CAD models

| | |
|-------------------------------|----------------------------|
| Bore Diameter | 31.75 mm |
| d | 31.75 mm |
| s1 | 29,4 mm |
| A1 | 34,5 mm |
| B1 | 38,9 mm |
| G | 12 mm |
| J | 92 mm |
| L | 118 mm |
| T | 50,4 mm |
| A2 | 13 mm |
| Weight | 1,55 Kg |
| Basic dynamic load rating (C) | 25,5 kN |
| Basic static load rating (C0) | 15,3 kN |
| Fatigue load limit (Pu) | 0,655 |
| Category | Flange Block Bearings |
| Inventory | 0.0 |
| Manufacturer Name | SKF |
| Minimum Buy Quantity | N/A |
| Weight / Kilogram | 1.6 |
| EAN | 7316576615016 |
| Product Group | M06110 |
| Number of Mounting Holes | 4 |
| Mounting Method | Eccentric Collar |
| Housing Style | 4 Bolt Square Flange Block |
| Rolling Element | Ball Bearing |
| Housing Material | Cast Iron |



NTN Bearing Manufacturing

| | |
|------------------------------------|--|
| Expansion / Non-expansion | Non-expansion |
| Mounting Bolts | 1/2 Inch |
| Relubricatable | Yes |
| Insert Part Number | YET 207-104 |
| Seals | M Seal |
| Housing Configuration | 1 Piece Solid |
| Pilot Configuration | No Pilot |
| Inch - Metric | Inch |
| Long Description | 4 Bolt Square Flange Block; 1-1/4" Bore; 5.1" Bolt Circle; 3-5/8" Bolt Spacing; 1 Piece Solid; Eccentric Collar Mount; Cast Iron; Ball Bearing; 1-17/32" Length Thru Bore; Relubrica |
| Other Features | Single Row Standard Duty Narrow Inner Race Open End Y Bearing |
| Category | Flange Block |
| UNSPSC | 31171501 |
| Harmonized Tariff Code | 8483.20.40.40 |
| Noun | Bearing |
| Keyword String | Flanged |
| Manufacturer URL | http://www.skf.com |
| Manufacturer Item Number | FY 1.1/4 FM |
| Weight / LBS | 3.53 |
| Nominal Bolt Circle Diameter Round | 5.1 Inch 130 Millimeter |
| Bore | 1.25 Inch 31.75 Millimeter |
| Cartridge Pilot Diameter | 0 Inch 0 Millimeter |
| Length Thru Bore | 1.531 Inch 38.9 Millimeter |
| Bolt Spacing | 3.625 Inch 92.08 Millimeter |
| Cartridge Pilot Depth | 0 Inch 0 Millimeter |
| Housing material | Cast iron |
| | |



NTN Bearing Manufacturing

| | |
|---|---------------|
| D_a | 106.4 mm |
| D_{b1} | 87 mm |
| D_{b2} | 95 mm |
| A | 34.5 mm |
| A_1 | 13 mm |
| A_3 | 3.2 mm |
| A_5 | 24.5 mm |
| B_1 | 38.9 mm |
| N | 14 mm |
| s_1 | 29.4 mm |
| R_G | 1/4-28 UNF |
| R_1 | 22.5 mm |
| D_N | 6.5 mm |
| SW_N | 7 mm |
| G_N | 1/4-28 SAE-LT |
| J_6 | 106 mm |
| J_7 | 29 mm |
| N_4 | 4 mm |
| Basic dynamic load rating C | 25.5 kN |
| Basic static load rating C_0 | 15.3 kN |
| Fatigue load limit P_u | 0.655 kN |
| Limiting speed | 5300 r/min |
| Mass bearing unit | 1.35 kg |
| Thread grub screw G_2 | 3/8-24 UNF |
| Hexagonal key size for grub screw N | 4.763 mm |
| Recommended tightening torque for grub screw | 16.5 N · m |
| Recommended diameter for attachment bolts, mm G | 12 mm |
| Recommended diameter for attachment bolts, inch G | 0.5 in |