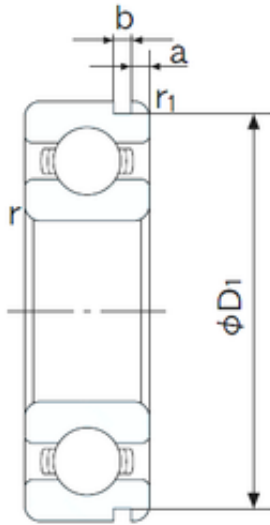




NTN Bearing Manufacturing



20 mm x 37 mm x 9 mm NACHI 6904N deep groove ball bearings

Bearing No. 6904N

6904N Bearing 2D drawings and 3D CAD models

Size	20x37x9 mm
Bore Diameter	20 mm
Outer Diameter	37 mm
Width	9 mm
d	20 mm
D	37 mm
B	9 mm
C	9 mm
a	1.7 mm
b	0.95 mm
r min.	0.3 mm
r1 min.	0.3 mm
D1	35.7 mm
Weight	0.037 Kg
Basic dynamic load rating (C)	6,35 kN
Basic static load rating (C0)	3,7 kN
(Grease) Lubrication Speed	19000 r/min
Bore Type	Cylindrical Bore
Enclosure	Open
Configuration	Single Row
Bore Size	20 mm
Outside Diameter	37 mm
Width	9 mm
Fillet Radius/Chamfer	0.3 mm
r1	0.3 mm



NTN Bearing Manufacturing

Groove Width	1 mm
Groove Diameter	35.7 mm
a (max)	1.7 mm
Dynamic Load Rating	6,350 N
Static Load Rating	3,700 N
Limiting Speed - Grease	19,000 rpm
Limiting Speed - Oil	23,000 rpm
Factor fo	14.8
Radial Clearance	0.005 to 0.020 mm
da (min)	22 mm
Da (max)	35 mm
Dx (min)	40.5 mm
ra (max)	0.3 mm
Cy (max)	2.3 mm