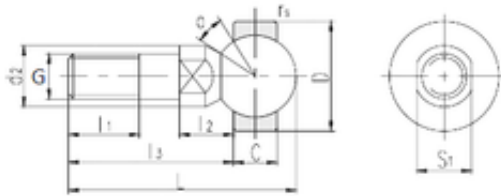




NTN Bearing Manufacturing

LS SQDL10 plain bearings



Bearing No. SQDL10

S1	11 mm
d2	14 mm
l1 min.	15 mm
l2 max.	14,2 mm
l3 min.	34,2 mm
r min.	0,3 mm
C	10,5 mm
D	26 mm
L	49 mm
Thread (G)	M10 × 1,25
Angle	25 °
Weight	0,067 Kg

SQDL10 Bearing 2D drawings and 3D CAD models