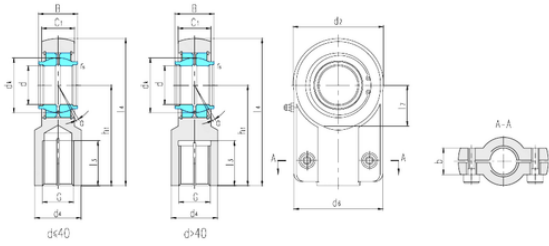




NTN Bearing Manufacturing



LS SIGEW40ES plain bearings

Bearing No. SIGEW40ES

Bore Diameter	40 mm
d	40 mm
B	40 mm
b	26 mm
d2	90 mm
d4	47 mm
d6	80 mm
dk	53 mm
h1	97 mm
l3 min.	52,5 mm
l4 max.	146 mm
l7 min.	41 mm
r min.	0,6 mm
C1	33 mm
Thread (G)	M33 × 2
Angle	4 °
Weight	2,18 Kg
Basic dynamic load rating (C)	99 kN
Basic static load rating (C0)	204 kN

SIGEW40ES Bearing 2D drawings and 3D CAD models