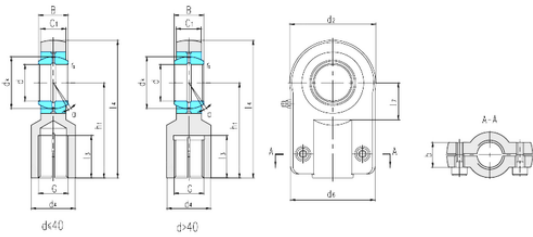




NTN Bearing Manufacturing



LS SIQ100ES plain bearings

Bearing No. SIQ100ES

SIQ100ES Bearing 2D drawings and 3D CAD models

Bore Diameter	100 mm
d	100 mm
B	70 mm
b	55 mm
d2	240 mm
d4	110 mm
d6	190 mm
dk	130 mm
h1	240 mm
l3 min.	102 mm
l4 max.	360 mm
l7 min.	116 mm
r min.	1 mm
C1	57 mm
Thread (G)	M64 × 3
Bolt (G)	M24 × 55
Angle	7 °
Weight	28,4 Kg
Basic dynamic load rating (C)	607 kN