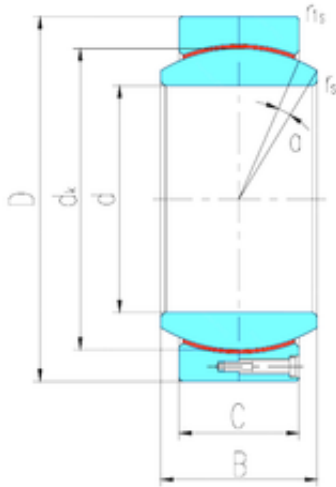




# NTN Bearing Manufacturing



220 mm x 320 mm x 155 mm LS GEH220HT  
plain bearings

Bearing No. GEH220HT

Size	220x320x155 mm
Bore Diameter	220 mm
Outer Diameter	320 mm
Width	155 mm
d	220 mm
D	320 mm
B	155 mm
C	148 mm
dk	290 mm
r min.	1,1 mm
r1 min.	1,1 mm
Angle	2 °
Weight	49,4 Kg
Basic dynamic load rating (C)	6430 kN

GEH220HT Bearing 2D drawings and 3D CAD models