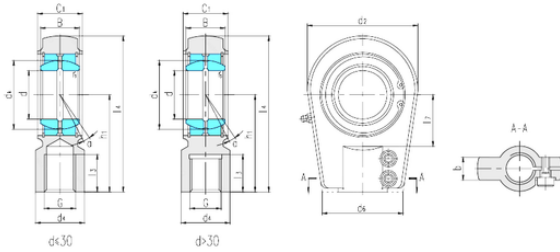




NTN Bearing Manufacturing



LS SIA35ES plain bearings

Bearing No. SIA35ES

SIA35ES Bearing 2D drawings and 3D CAD models

Bore Diameter	35 mm
d	35 mm
B	25 mm
b	28 mm
d2	78 mm
d4	45 mm
d6	65 mm
dk	47 mm
h1	90 mm
l3 min.	46 mm
l4 max.	132 mm
l7 min.	40 mm
r min.	0,6 mm
C1 max	30 mm
Thread (G)	M30 × 2
Bolt (G)	M10 × 30
Angle	6 °
Weight	1,52 Kg
Basic dynamic load rating (C)	79 kN