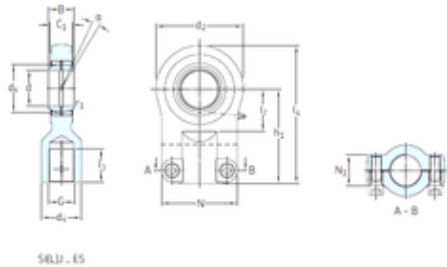




NTN Bearing Manufacturing

SKF SILQG16ES plain bearings



Bearing No. SILQG16ES

Bore Diameter	16 mm
d	16 mm
d2	41 mm
d4 max.	22 mm
dk	23 mm
h1	44 mm
l3 min.	19 mm
l4 max.	64,5 mm
l7 min.	17 mm
r1 min.	0,3 mm
B	16 mm
C1 max	14 mm
N max	41 mm
N1 max	14 mm
Thread (G)	M14x1,5 Tolerance 6H
Angle	4 °
Weight	0,21 Kg
Basic dynamic load rating (C)	17,6 kN

SILQG16ES Bearing 2D drawings and 3D CAD models