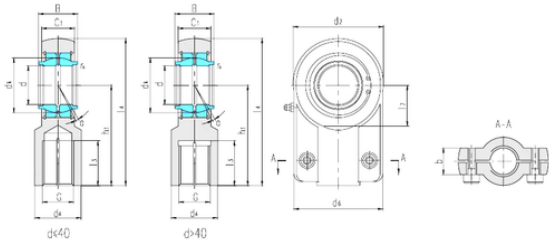




# NTN Bearing Manufacturing



## LS SIGEW50ES plain bearings

Bearing No. SIGEW50ES

SIGEW50ES Bearing 2D drawings and 3D CAD models

Bore Diameter	50 mm
d	50 mm
B	50 mm
b	32 mm
d2	109 mm
d4	58 mm
d6	96 mm
dk	66 mm
h1	120 mm
l3 min.	63,5 mm
l4 max.	179,5 mm
l7 min.	50 mm
r min.	0,6 mm
C1	40 mm
Thread (G)	M42 × 2
Angle	4 °
Weight	3,96 Kg
Basic dynamic load rating (C)	156 kN
Basic static load rating (C0)	310 kN