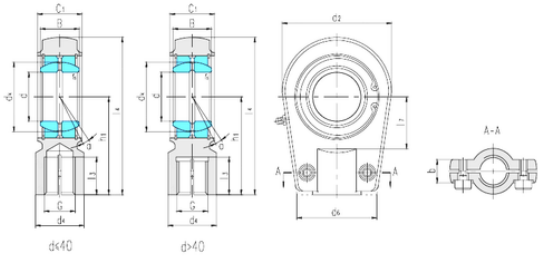




# NTN Bearing Manufacturing



## LS SIR30ES plain bearings

Bearing No. SIR30ES

Bore Diameter	30 mm
d	30 mm
B	22 mm
b	26 mm
d2	64 mm
d4	32 mm
d6	50 mm
dk	40,7 mm
h1	60 mm
l3 min.	23 mm
l4 max.	94 mm
l7 min.	30 mm
r min.	0,6 mm
C1	28 mm
Thread (G)	M22 × 1,5
Bolt (G)	M8 × 25
Angle	6 °
Weight	0,77 Kg
Basic dynamic load rating (C)	62 kN

SIR30ES Bearing 2D drawings and 3D CAD models