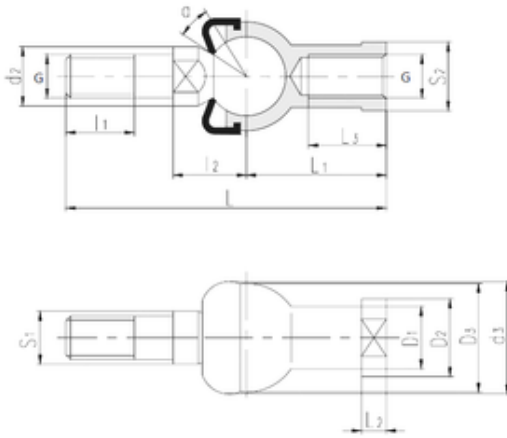




NTN Bearing Manufacturing



LS SQZL12-RS plain bearings

Bearing No. SQZL12-RS

S1	15 mm
L2	6,5 mm
L3	20 mm
d2	17 mm
d3	32 mm
l1 min.	17 mm
l2 max.	21 mm
D1	17,5 mm
D2	22 mm
D3	32 mm
L	84 mm
L1	40 mm
S2	19 mm
Thread (G)	M12 × 1,25
Angle	15 °
Weight	0,18 Kg

SQZL12-RS Bearing 2D drawings and 3D CAD models